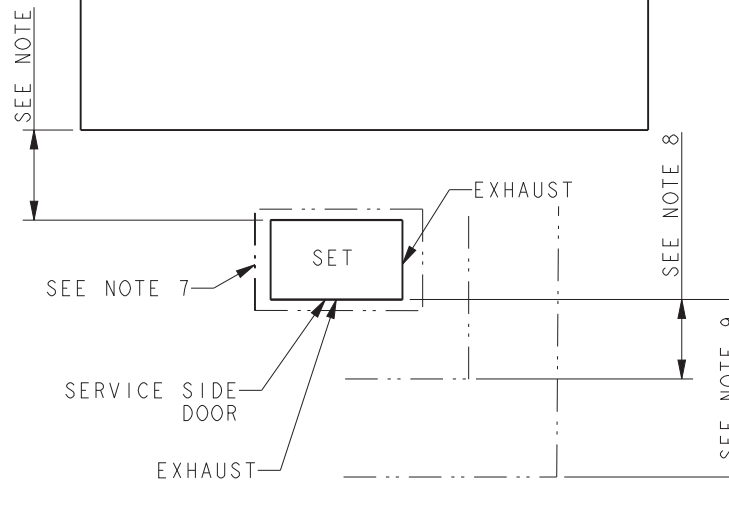
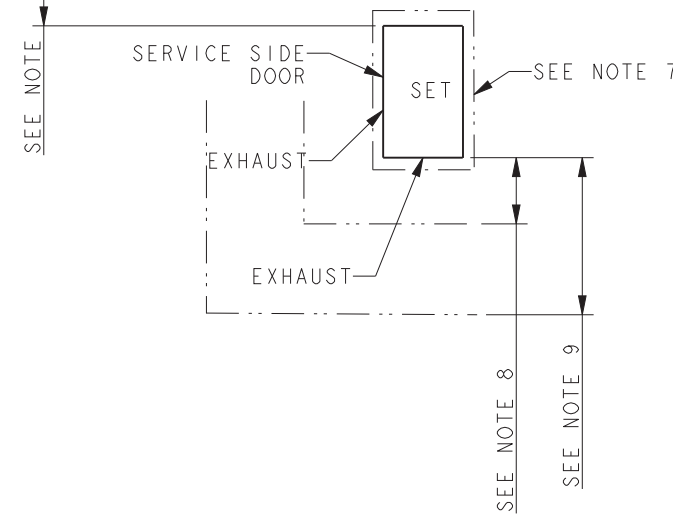
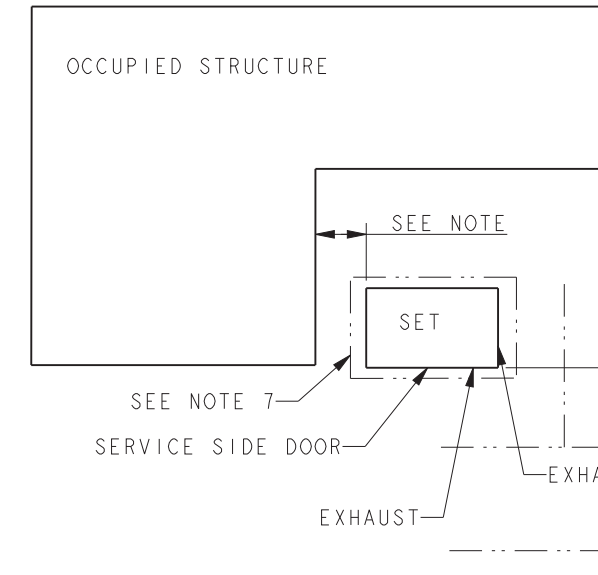
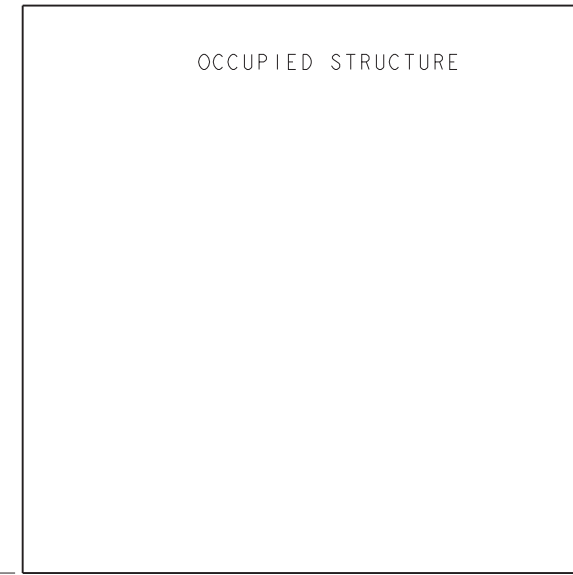
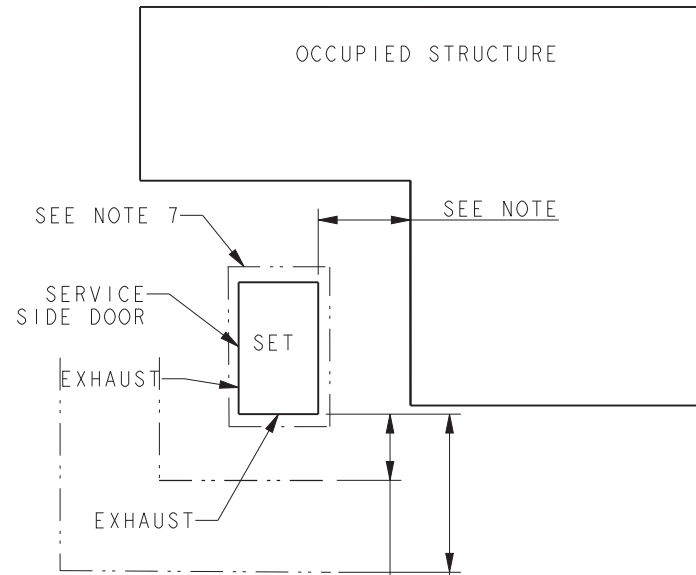
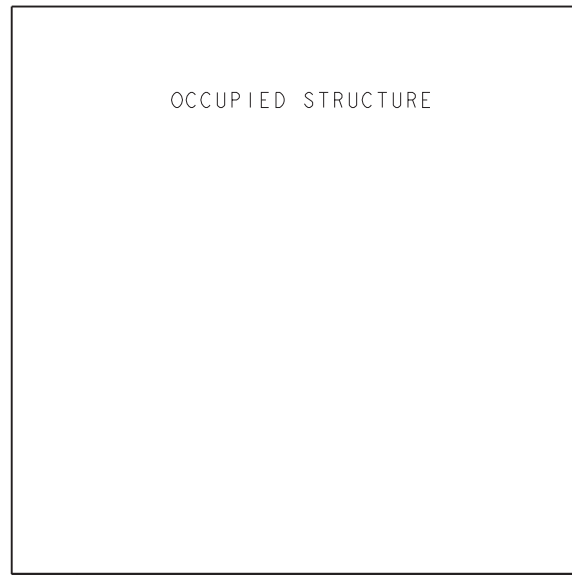


NOTE:
DIMENSIONS IN [] ARE ENGLISH STANDARD EQUIVALENTS

30RCL/38RCLB

REV	DATE	ON COMPOSITE DWGS. SEE PART NO. FOR REVISION LEVEL	BY	UNLESS OTHERWISE SPECIFIED - 1) DIMENSIONS ARE IN MILLIMETERS 2) TOLERANCES ARE:	APPROVALS	DATE	KOHLER CO. METRIC PRO-E POWER SYSTEMS, KOHLER, WI 53044 U.S.A. THIS DRAWING IN DESIGN AND DETAIL IS KOHLER CO. PROPERTY AND MUST NOT BE USED EXCEPT IN CONNECTION WITH KOHLER CO. WORK. ALL RIGHTS OF DESIGN OR INVENTION ARE RESERVED. TITLE DIMENSION PRINT, 2.2L TURBO
-	6-9-15	NEW DRAWING [CT115380]	BGW	X.XX ± 0.25		6-9-15	
A	2-25-19	SEE SHEET 2 [CT193814]	HM	X.X ± 1.0 X ± 1.5 ANGLES ± 0° 30'		6-9-15	
					APPROVED	6-9-15	



INSTALLATION GUIDELINES

- 1) EXHAUST IS AIMED AWAY FROM OR PARALLEL TO THE STRUCTURE.
- 2) EXHAUST IS NOT DIRECTED AT PLAY AREAS, PATIOS OR OTHER AREAS WHERE PEOPLE CONGREGATE.
- 3) THE NEAREST WINDOW, VENT, DOOR OR SIMILAR STRUCTURE OPENING IS AT LEAST 5 FEET FROM THE EXHAUST END OF THE SET.
- 4) SET HAS PROPER OFFSET FROM STRUCTURE.
- 5) WINDOWS & DOORS ON ADJACENT WALLS ARE CLOSED.
- 6) FURNACE AND OTHER SIMILAR INTAKES ARE AT LEAST 10 FEET FROM EXHAUST END OF SET.
- 7) 4" THICK CONCRETE PAD EXTENDING 6" BEYOND GENSET ON ALL SIDES.
- 8) WEED BARRIER & GRAVEL BED TO EXTEND 4 FT. FROM EXHAUST OUTLET. NO PLANTS, SHRUBS OR OTHER COMBUSTIBLES ALLOWED IN GRAVEL AREA.
- 9) SENSITIVE PLANTS, PATIO FURNITURE, ETC. ARE AT LEAST 8 FEET FROM EXHAUST END OF SET.
- 10) REFER TO OWNERS MANUAL FOR OTHER INSTALLATION CONSTRAINTS.

NOTE:

THE RECOMMENDED DISTANCE FROM A STRUCTURE IS DEPENDENT ON STATE AND LOCAL CODES.
 NFPA 37 (STANDARDS FOR THE INSTALLATION AND USE OF STATIONARY COMBUSTION ENGINES AND GAS TURBINES) STATES THIS DISTANCE SHOULD BE AT LEAST 5 FEET FROM A COMBUSTIBLE MATERIAL.
 FOR INSTALLATIONS NEAR NON-COMBUSTIBLE MATERIAL, BE SURE TO LEAVE A MINIMUM DISTANCE OF 3 FEET TO EXHAUST SIDES OR 18 INCHES TO INTAKE SIDES TO ENSURE PROPER GENERATOR COOLING. IT IS RECOMMENDED TO LEAVE 24 INCHES OF CLEARANCE ON THE INTAKE SIDE WITH THE SERVICE DOORS.

30RCL/38RCLB

REV	DATE	ON COMPOSITE DWGS. SEE PART NO. FOR REVISION LEVEL	BY	UNLESS OTHERWISE SPECIFIED - 1) DIMENSIONS ARE IN MILLIMETERS 2) TOLERANCES ARE:
-	6-9-15	NEW DRAWING [CT115380]	BGW	X.XX ± 0.25 X.X ± 1.0 X ± 1.5
A	2-25-19	(B-4,7), (C-1,3,6,8) EXHAUST NOTE ADDED; (B-3,4) NOTE UPDATED [CT193814]	HM	ANGLES ± 0° 30' MAX. SURFACE FINISH
				THIRD ANGLE PROJECTION
				APPROVALS DATE
				DRAWN BGW 6-9-15
				CHECKED JJR 6-9-15
				APPROVED JJR 6-9-15

KOHLER CO. METRIC PRO-E
 POWER SYSTEMS, KOHLER, WI 53044 U.S.A.
 THIS DRAWING IN DESIGN AND DETAIL IS KOHLER CO. PROPERTY AND MUST NOT BE USED EXCEPT IN CONNECTION WITH KOHLER CO. WORK. ALL RIGHTS OF DESIGN OR INVENTION ARE RESERVED.

TITLE **DIMENSION PRINT, 2.2L TURBO**

SCALE 0.10 CAD NO. SHEET 2 of 2
 DWG NO. **ADV-8663** D